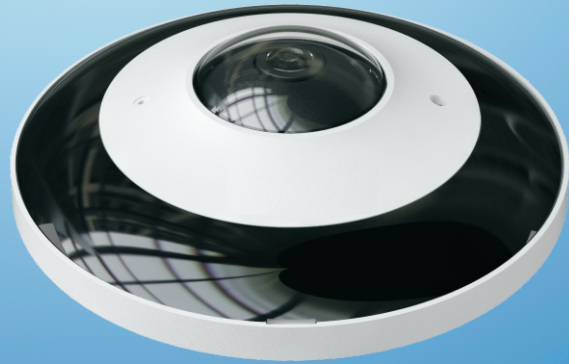


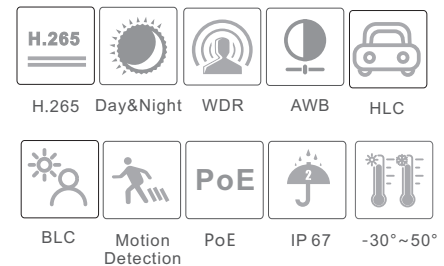
CAMERA

IP-6360

6MP Network IR Water-Proof
Fisheye Camera



- 6MP H.265 full real time coding
- Effective pixels: 2160 × 2160;
- ICR auto switch, true day / night
- 20 ~ 30m IR night view distance
- 3D DNR, digital WDR, HLC, BLC and ROI coding
- One CVBS output
- 1CH audio input, 1CH audio output, 1CH built-in MIC
- Built-in micro SD card slot, up to 128GB
- Hardware reset; RS485
- 1CH alarm input; 1CH alarm output
- DC12V/PoE power supply
- Support smart phone, iPad, remote monitoring
- IP67 ingress protection
- Support three streams



This document is intended for the exclusive viewing of the intended recipient. Disclosure, copying, distribution, or use of the content is strictly prohibited. These materials are for illustration purposes only and the actual product may vary in size and/or color. All specifications are subject to change without notice.

for more information visit www.shieldcctv.com

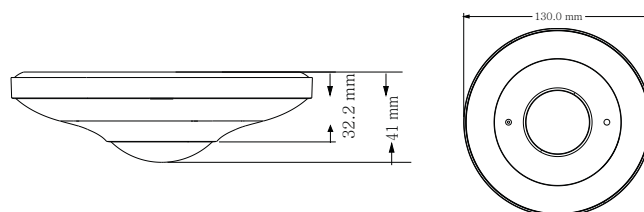
©Shield Technology Inc.

SPECIFICATIONS

| Model | IP-6360 |
|-----------------------------|--|
| Specifications | |
| Camera | |
| Image Sensor | 1 / 2.9 "6MP progressive scan CMOS |
| Effective Pixels | 2160×2160 |
| Electronic Shutter | 1 / 25 s ~ 1 / 100000 s |
| Min. Illumination | 0.068lux@F2.0, AGC ON; 0 lux with IR |
| Lens | 1.07mm @F2.5, horizontal field of view : 180° (wall mounting) 360° (ceiling mounting) |
| Day & Night | ICR |
| Wide Dynamic Range | Digital WDR |
| BLC | Yes |
| HLC | Yes |
| Digital NR | 3D DNR |
| Slow Shutter | Yes |
| Compression Standard | |
| Video Compression | H.265 / H.264 / MJPEG |
| Encoding Type | VBR (five levels adjustable) / CBR |
| Smart Encoding | Support low bitrate, low delay; support ROI coding & SVC technology; support self-adaptive transmission bitrate as the network environment |
| Bit Rate | 128 Kbps ~ 16 Mbps |
| Audio Compression | G711A / U |
| Audio Bit Rate | 8Kbps ~ 48 Kbps |
| Image | |
| Main Stream | ① Fisheye+panorama+3 PTZ 50Hz: 25fps@(2160 × 2160/1920×1920/1440×1440), 25fps@(1920 × 1080), 25fps@(960× 540)*3 60Hz: 30fps@(2160 × 2160/1920×1920/1440×1440), 30fps@(1920 × 1080), 30fps@(960× 540)*3 ② Fisheye+ 4 PTZ 50Hz: 25fps@(2160 × 2160/1920×1920/1440×1440), 25fps@(960× 540)*4 60Hz: 30fps@(2160 × 2160/1920×1920/1440×1440), 30fps@(960× 540)*4 |
| Max. Image Size | 2160 * 2160 |
| ROI | Each ROI to be configured separately |
| Image Settings | ROI, Saturation, Brightness, Chroma, Contrast, Wide Dynamic, Sharpen, NR, etc. adjustable through client software or web browser |
| Interfaces | |
| Network | RJ45 |
| Video Output | CVBS output (BNC × 1) |
| Audio | 1CH audio input; 1CH audio output; 1CH built-in MIC |
| Storage | Built-in micro SD card slot; up to 128GB |
| Hardware Reset | Yes |
| Alarm | 1CH alarm input; 1CH alarm output |
| RS 485 | Yes |
| Functions | |
| Remote Monitoring | Web browsing, CMS remote control |
| Online Connection | Support simultaneous monitoring for up to 11 users; Support multi-stream real time transmission |
| Network Protocol | UDP, IPv4, IPv6, DHCP, NTP, RTSP, PPPoE, DDNS, SMTP, FTP, SNMP, UPnP, HTTP |
| Interface Protocol | ONVIF, GB-T/28181-2011 |
| Storage | Network remote storage; micro SD card storage |
| Smart Alarm | Motion detection; Sensor alarm |

| | |
|-----------------------|---|
| General function | Watermark, IP address filtering, video mask |
| PoE | Yes |
| IR Distance | 20 ~ 30 m |
| Ingress Protection | IP67 |
| Others | |
| Power Supply | DC12V/PoE |
| Power Consumption | < 12W |
| Operating Environment | - 30 °C ~ 50 °C (-22°F~122°F) Humidity: less than 95 % (non-condensing) |
| Dimensions (mm) | Φ 130 × 41 |
| Weight (net) | Approx. 0.45KG |
| Installation | Ceiling mounting(wall mounting available with the junction box and bracket) |

DIMENSIONS



AVAILABLE ACCESSORIES



AVAILABLE MODEL

| | |
|-----------------|---------|
| Available Model | IP-6360 |
|-----------------|---------|