

UPDATE FIRMWARE

Please follow the following steps to update your DVR firmware.

INDEX:

1. UPDATE FIRMWARE VIA USB

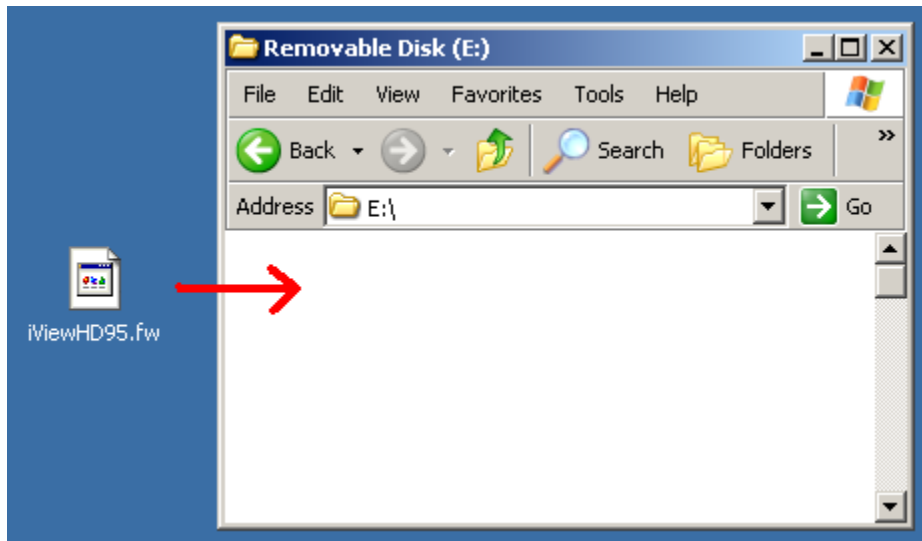
page 2

2. UPDATE FIRMWARE VIA REMOTE PC

page 7

1. UPDATE FIRMWARE VIA USB PEN DRIVES

1. Please visit iView website to download latest firmware from <http://www.iviewtech.com>
2. Copy .fw firmware file into your USB pen drive root directory



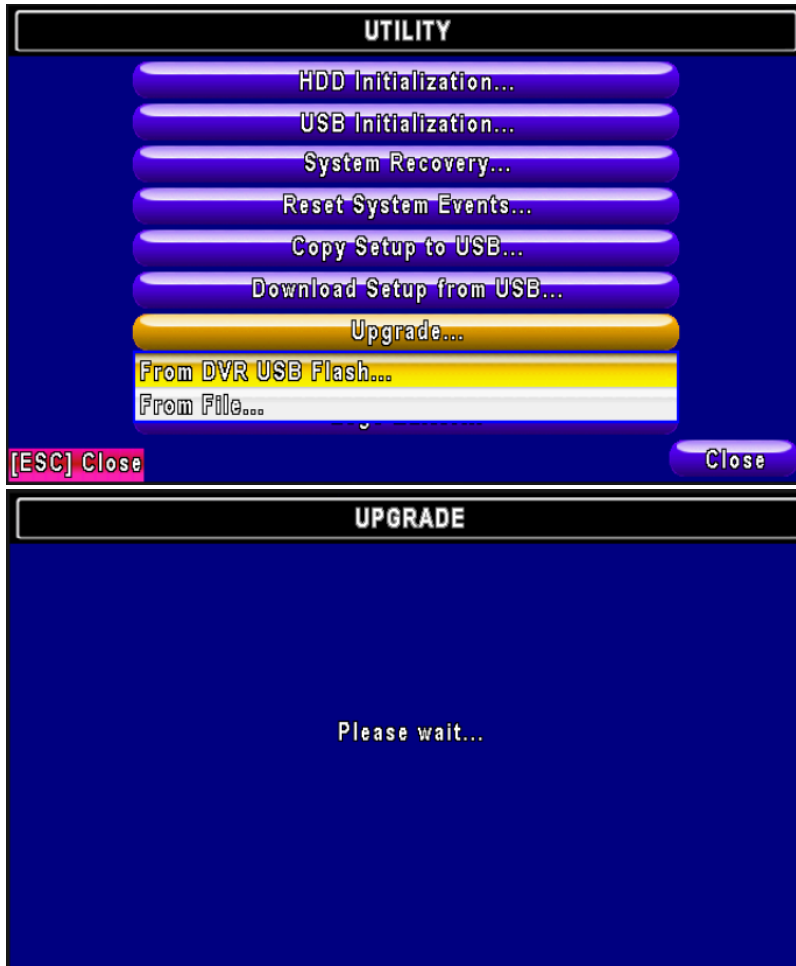
3. Insert the USB pen drive into the USB port on the DVR



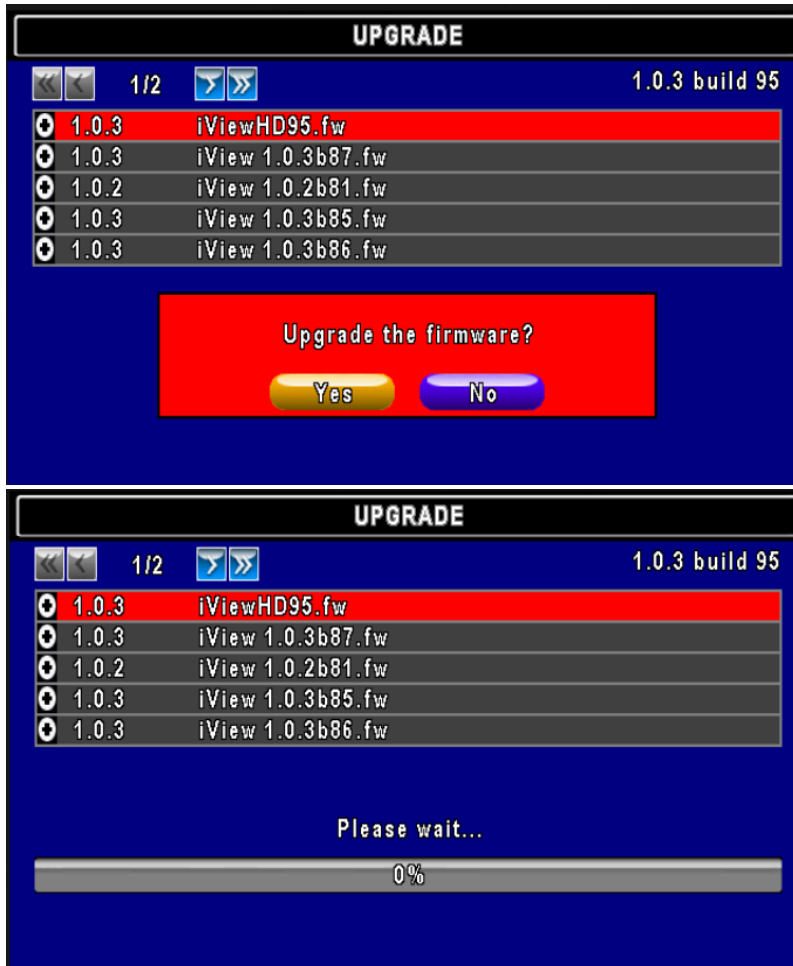
4. On DVR, please go to **Setup** → **Main Menu** → **Utility** , select “**UPGRADE**”



5. Select "From DVR USB Flash..."



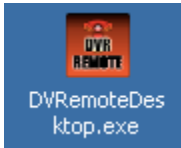
6. Select firmware and click YES to start. After finishing, DVR will restart itself.



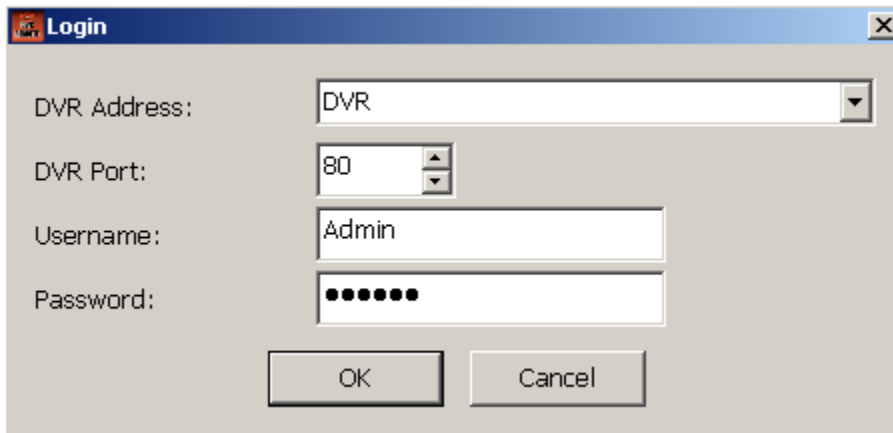
2. FIREMWARE UPDATE FROM REMOTE PC

note: We recommend this procedure from a LAN (Local Area Network) environment. Users will experience failures and PC freeze problem when updating from remote site where bandwidth is limited and insufficient. Recommended minimum requirement for bandwidth is 1Mbps/Sec or above at the DVR site for upload.

1. Open Remote Desktop Software from your PC

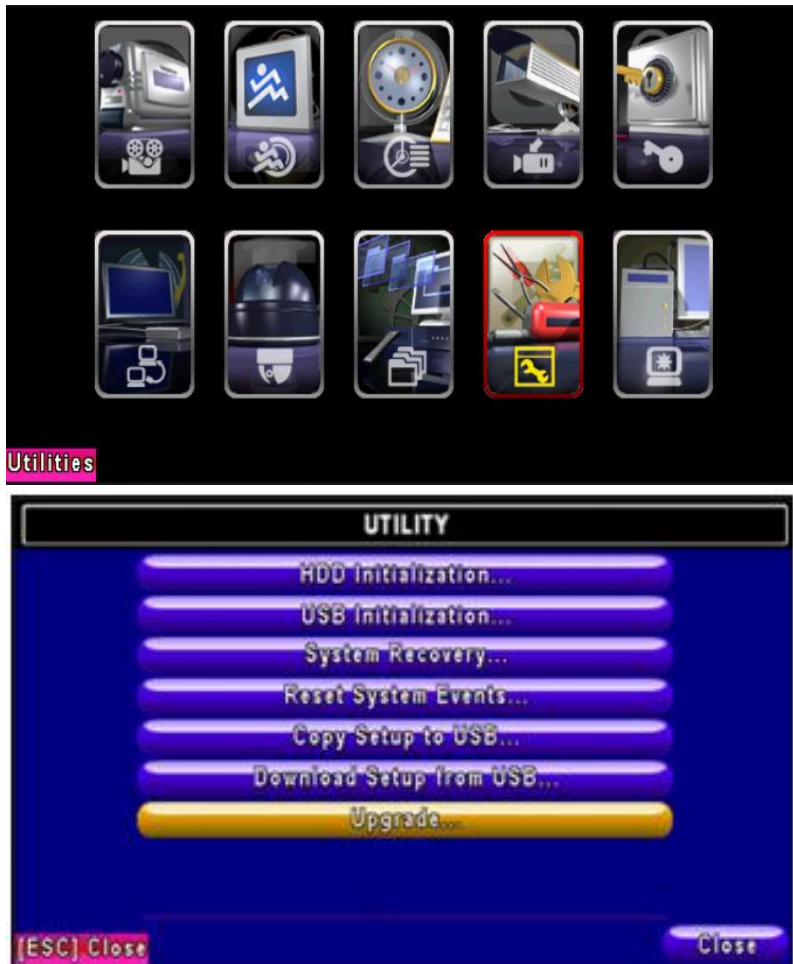


2. Enter your DVR ip information and click OK to log in



3. On DVR, please go to **Setup** → **Main Menu** → **Utility** , select “UPGRADE”





4. Select “ **From File...**”, a windows file dialog will appear. Select firmware and click OK to start. After finishing, DVR will restart itself.

